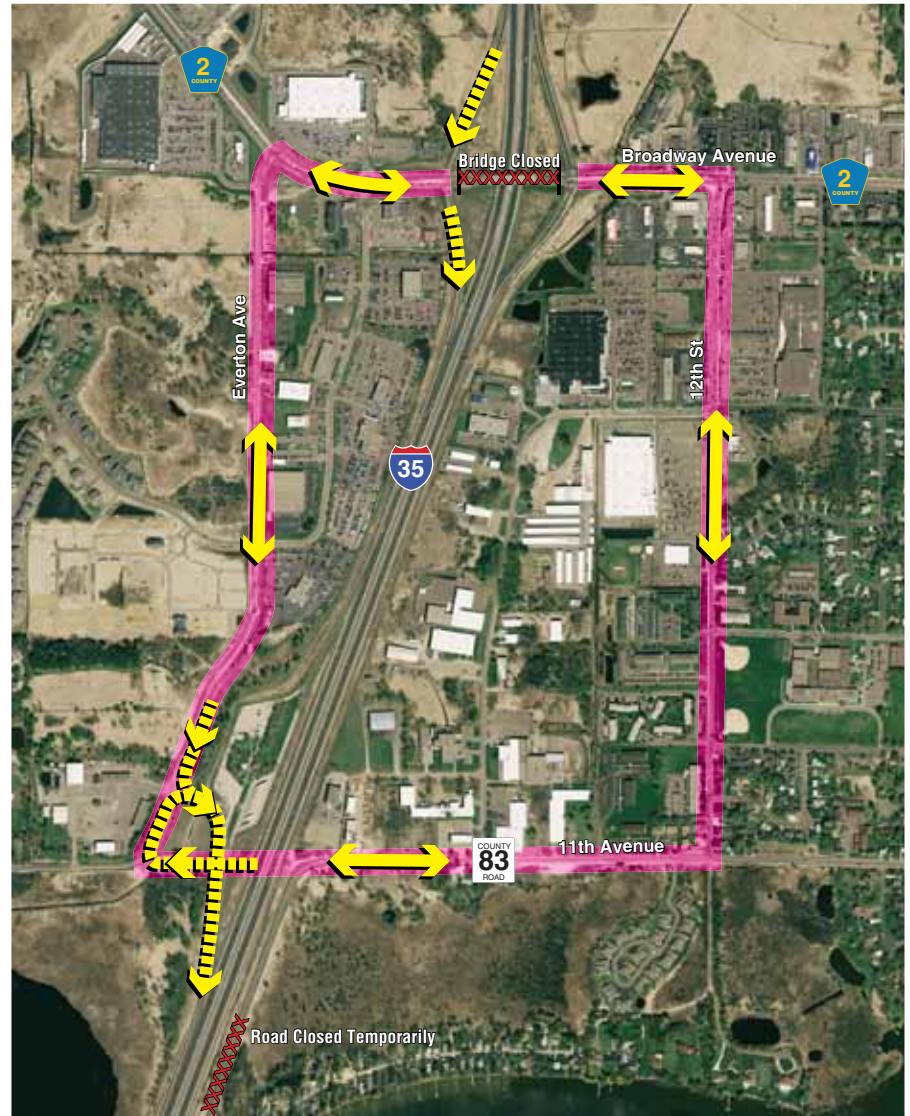


LOCAL DETOUR ROUTE

WHEN BROADWAY AVENUE BRIDGE IS CLOSED



NORTHBOUND I-35

SOUTHBOUND I-35

INFORMATION SUBJECT TO CHANGE



Project Website: www.broadwayaveforestlake.info

BROADWAY AVENUE
IMPROVEMENT PROJECT